

SUPPLEMENTAL DATA

Supplemental Table 1- Etiology of Complications

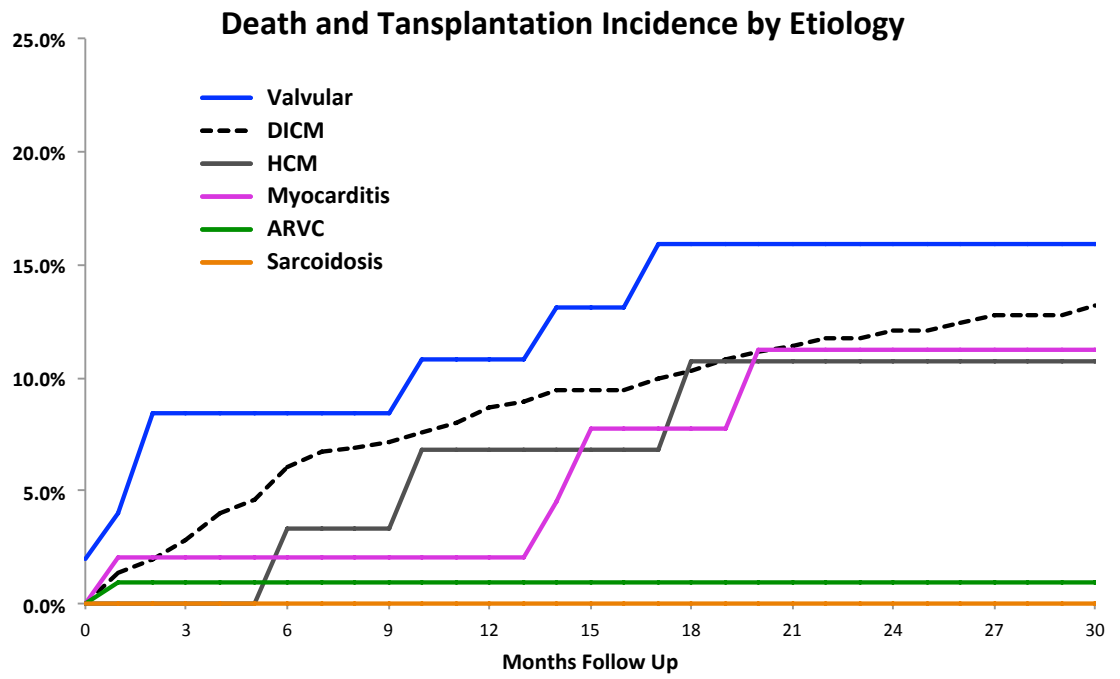
Complications	Number of Patients
Heart block	8
Pericardial Effusion	8
Ventricular perforation	6
Pulmonary Embolism	5
Tamponade	3
Vascular Complications	3
Coronary Artery Injury	2
Valvular Injury	2
Cardiac Arrest/PEA	2
Intra-abdominal bleeding	1
LV thrombus	1
TIA	1
Loss of LV Lead Capture	1
Phrenic nerve Injury	1
Intracranial Bleed	1
Unspecified Bleed	1

Supplemental Table 2 – Type of Complication by Etiology of Cardiomyopathy

	Heart block	Pericardial Effusion	Tamponade	RV/LV perf	Vascular Cx	LV clot	Coronary artery injury	Valvular injury	TIA	Intra-cranial bleed	Intra-abdominal bleed	PE	Cardiac Arrest/PEA	Loss of LV lead capture	Phrenic nerve injury	Un-specified bleeding
DICM	4	5	2	4	0	1	1	1	1	1	1	3	2	1	1	1
ARVC	0	1	0	0	0	0	1	0	0	0	0	1	0	0	0	0
Valvular	2	0	0	0	1	0	0	0	0	0	0	1	0	0	0	0
Myocarditis	1	1	1	0	1	0	0	0	0	0	0	0	0	0	0	0
HCM	1	0	0	2	0	0	0	1	0	0	0	0	0	0	0	0
Sarcoidosis	0	1	0	0	1	0	0	0	0	0	0	0	0	0	0	0

RV/LV perf = ventricular perforation; TIA = transient ischemic attack, PEA = pulseless electrical activity.

Supplemental Figure 1



Supplemental figure 1. Incidence of death and transplantation by etiology in the entire NICM cohort is shown.