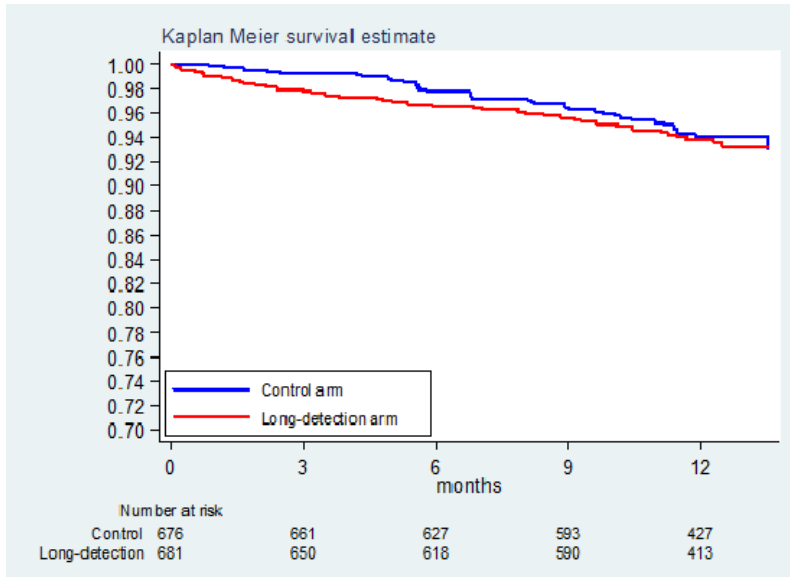


Supplementary Material

Supplemental Figure 1. Kaplan-Meier estimates of survival in patients implanted with Dual and triple chamber ICDs.



HR:1.11 (0.72-1.74) p = 0.63

Supplemental Table S1. Baseline characteristics of the VVI cohort compared with ADVANCEIII overall population

	VVI ICD N=545	ADVANCEIII N=1902
Patient demographics		
Age	62 (12)	65 (11)
Male gender	466 (86%)	1598 (84.0%)
Medical history		
Secondary prevention	175 (32%)	477 (25.1%)
VF/ V Flutter	62 (11%)	174 (9.1%)
Sustained VT history	110 (20%)	306 (16.1%)
Permanent Atrial Fibrillation	78 (14%)	212 (11.1%)
NYHA Class III or IV	123 (23%)	1007 (48.3%)
Angina	64 (12%)	232 (12.3%)
Coronary Artery Disease	371 (68%)	1133 (59.6%)
Previous Revascularization	247 (45%)	791 (41.6%)
QRS (ms)	106 (25)	127 (35)
LBB	66 (12%)	631 (33.2%)
Hypercholesterolemia	294 (54%)	993 (52.5%)
Diabetes	160 (29%)	554 (29.2%)
Chronic Kidney Disease	62 (11%)	235 (12.4%)
Baseline echocardiographic measures		
Moderate/Severe Mitral Regurgitation	58 (18%)	210 (12.9%)
LVEF (%)	31 (11)	30 (10)
LVDD (mm)	62 (8)	64 (9)
Baseline medical therapy		
ACE inhibitors/ARBII	431 (79%)	1531 (80.5%)

Antiarrhythmic	81 (15%)	378 (19.9%)
Beta-blockers	459 (84%)	1543 (81.1%)
Diuretics	386 (71%)	1491 (78.4%)
Anti-platelet	332 (30%)	1089 (57.3%)
Anti-coagulant	174 (32%)	596 (31.3%)
Cardiac Glycosides	79 (15%)	268 (14.1%)
Hypolipidemic	331 (61%)	1072 (56.4%)
Nitrates	84 (15%)	277 (14.6%)
Other Cardiac Medications	51 (9%)	181 (9.5%)
